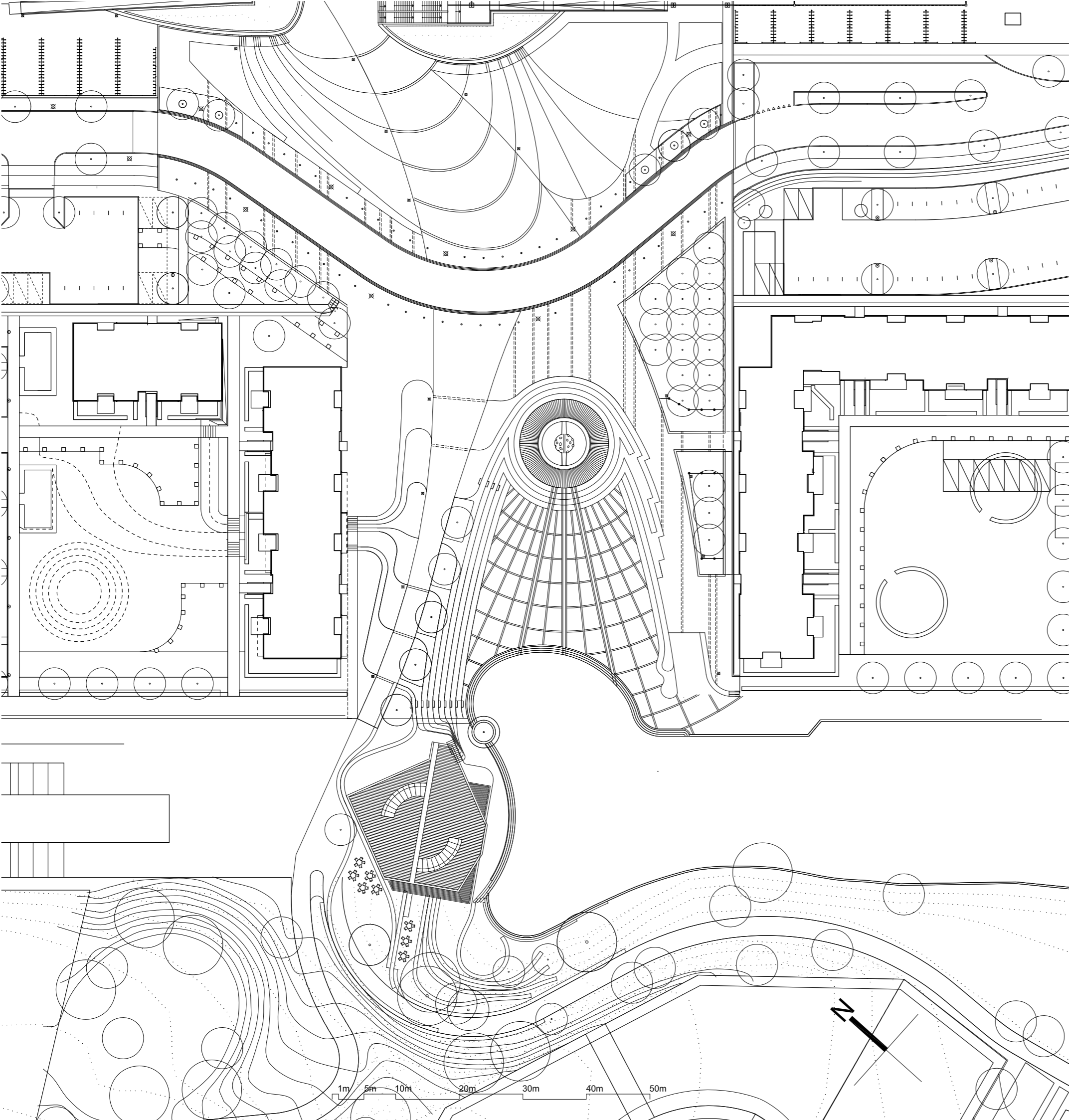




ATYPI

- Fælleshus ved Søndergård Torv, Måløv
12. september, 2013



ATYPI

Fælleshus ved Søndergård Torv

Bruttoarealer:

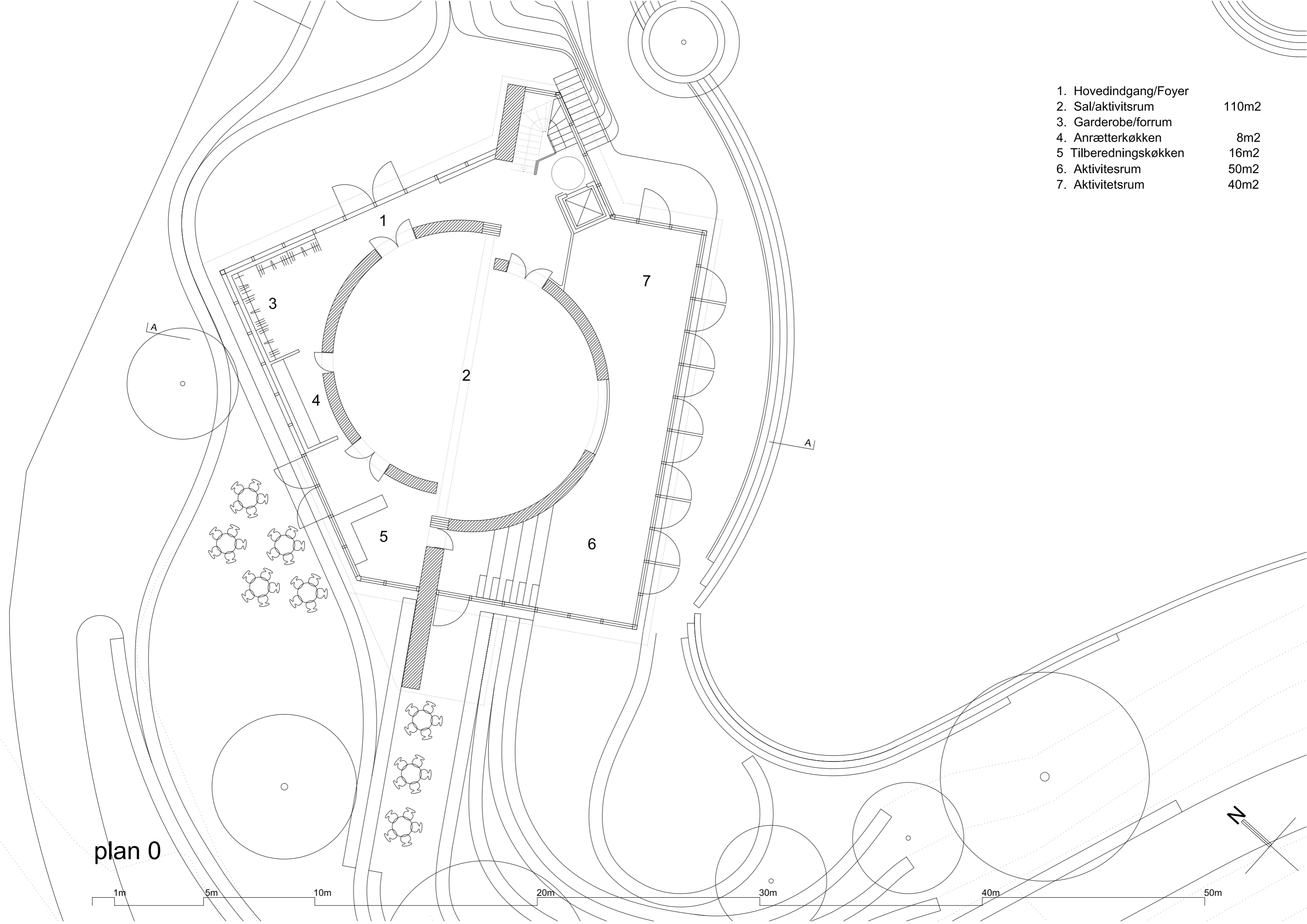
Plan 0: 333 m²

Plan 1: 166 m²

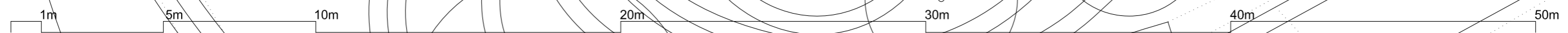
Plan -1: 77 m²

Samlet: 576 m²

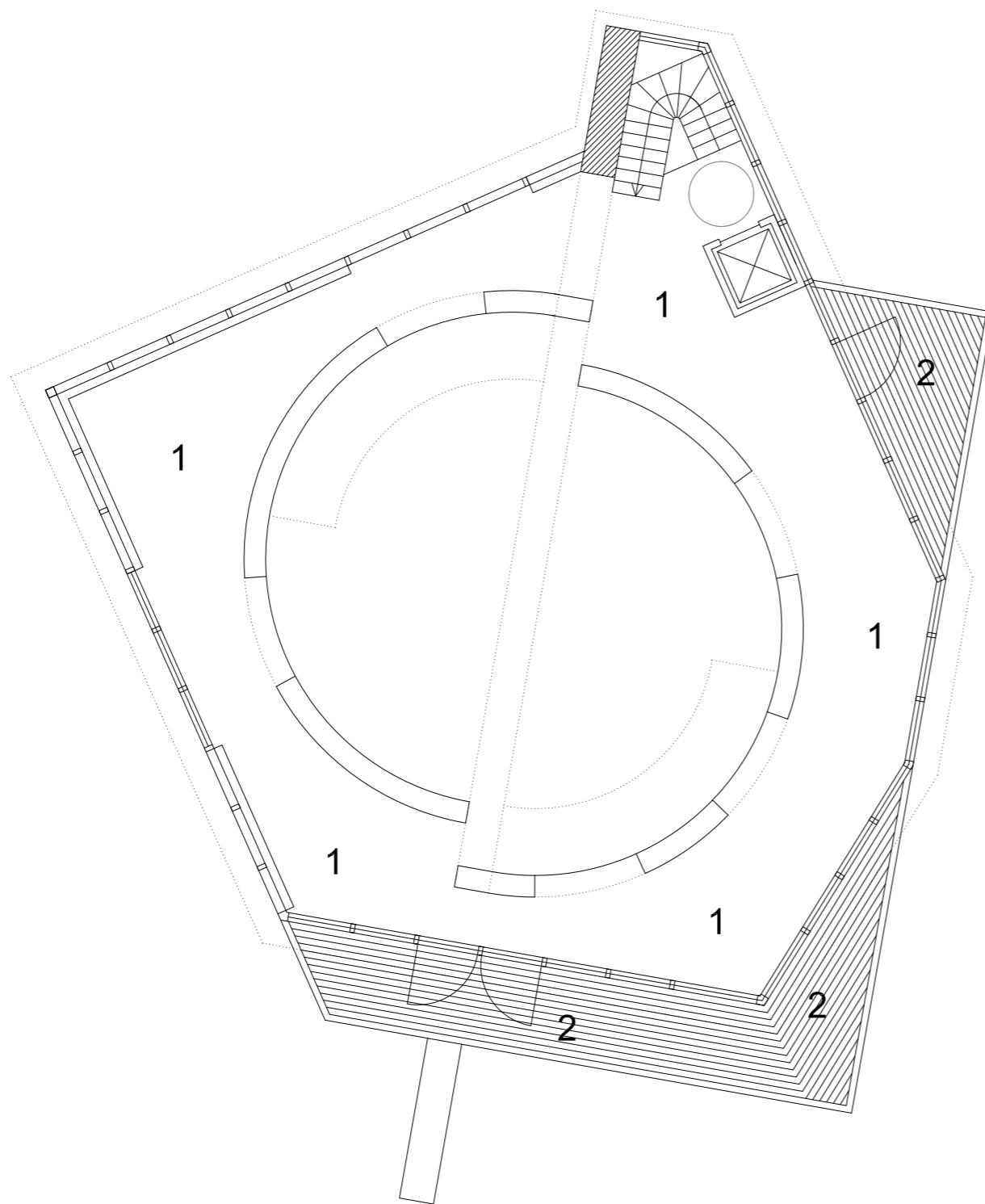
- 1. Hovedindgang/Foyer
- 2. Sal/aktivitsrum 110m2
- 3. Garderobe/forrum
- 4. Anrætterkøkken 8m2
- 5. Tilberedningskøkken 16m2
- 6. Aktivitesrum 50m2
- 7. Aktivitetsrum 40m2



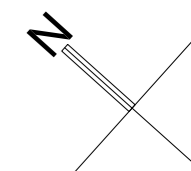
plan 0



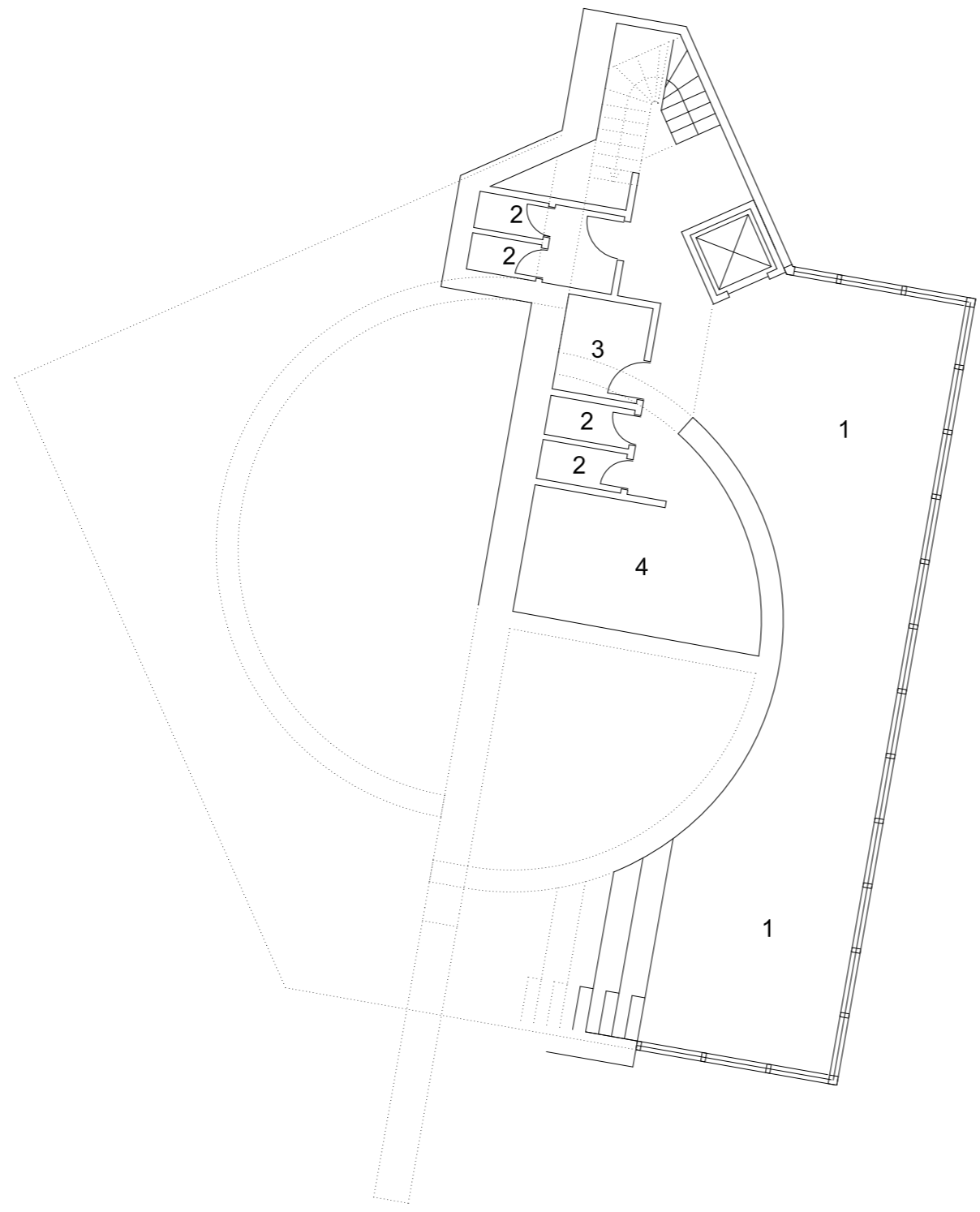
- 1. Multirum 166m²
- 2. Terrasser



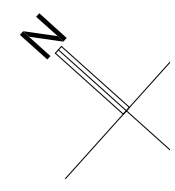
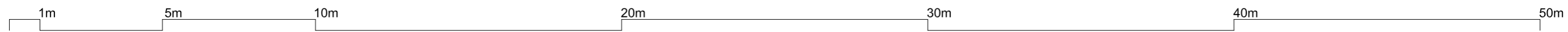
plan 1

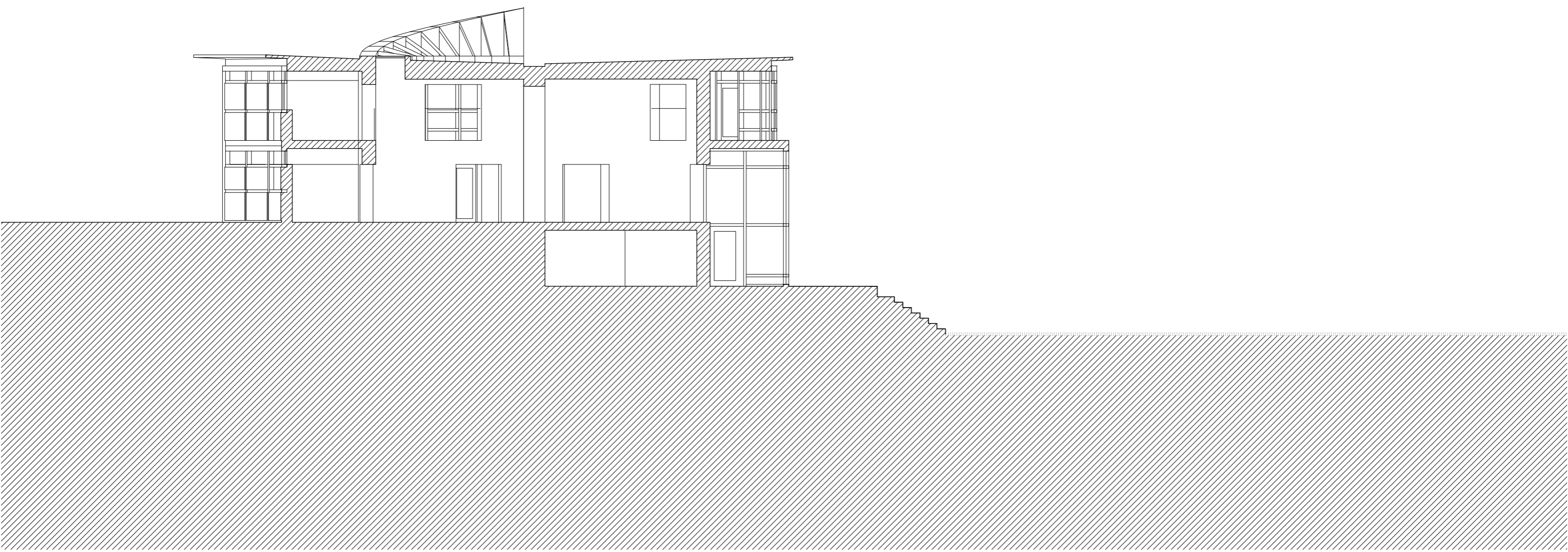


- 1. Sal/aktivitetsrum 83m2
- 2. Toiletter
- 3. HCWC
- 4. Depot/teknikrum 20m2



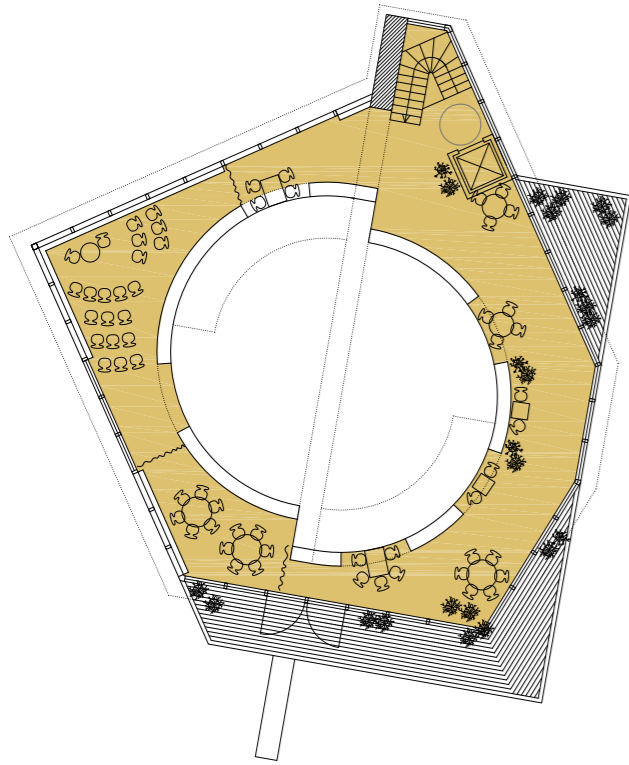
plan -1



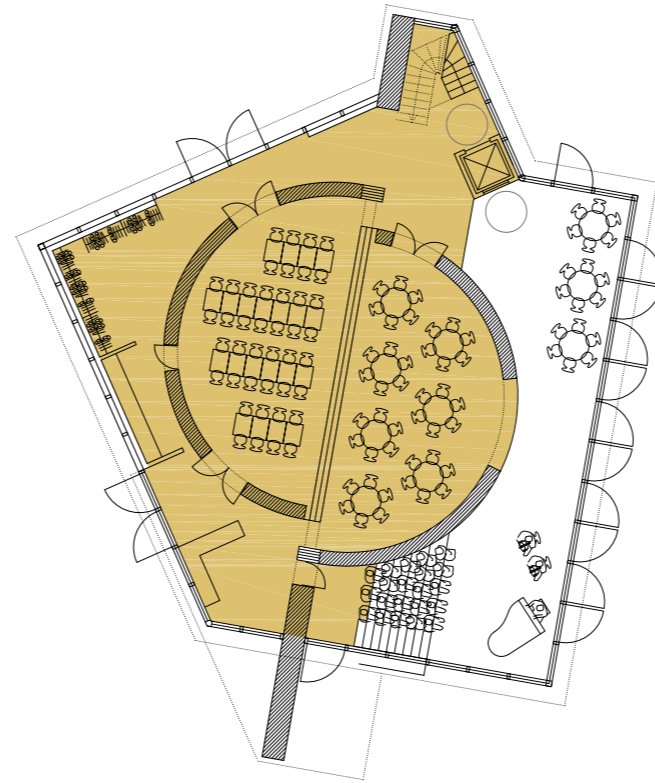


1m 5m 10m 20m 30m 40m 50m

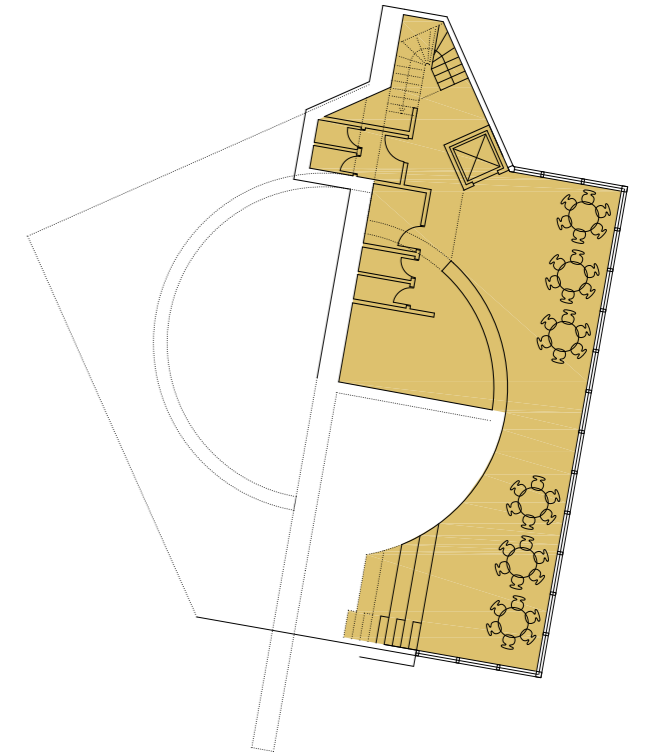
Snit AA



1. sal



Stueplan



Plan -1



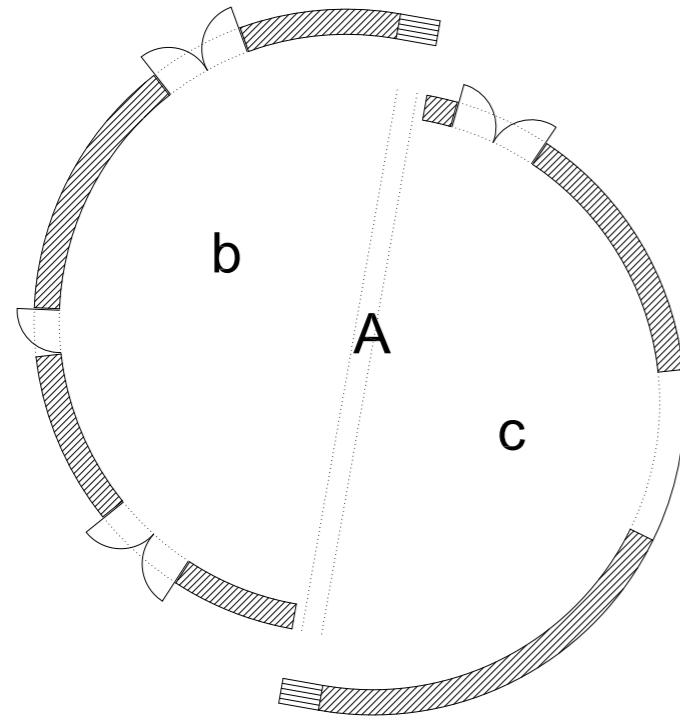
1.sal møbleret



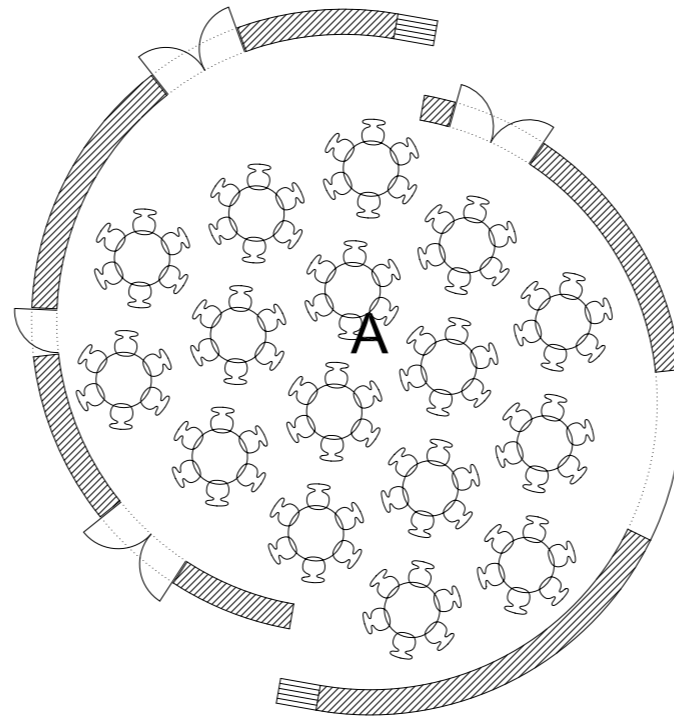
Stueplan møbleret med to sale



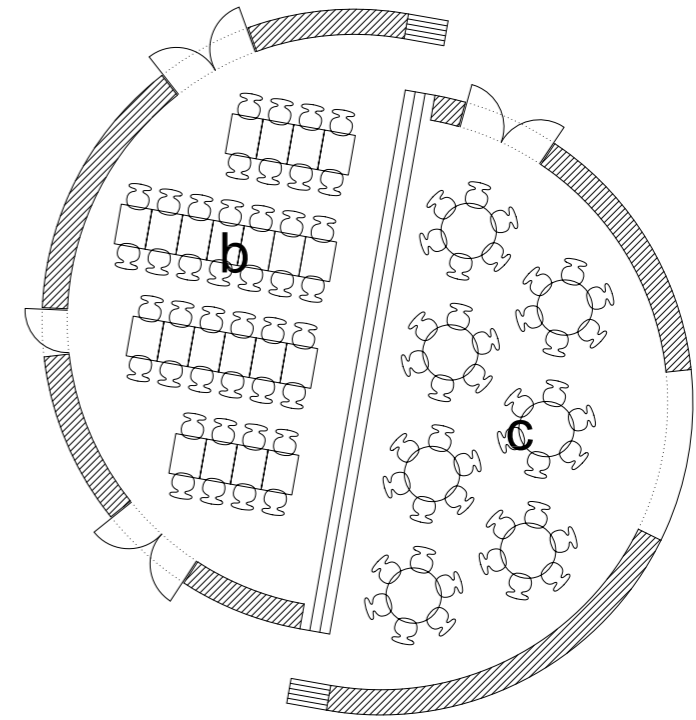
plan -1 møbleret til 36 personers selskab



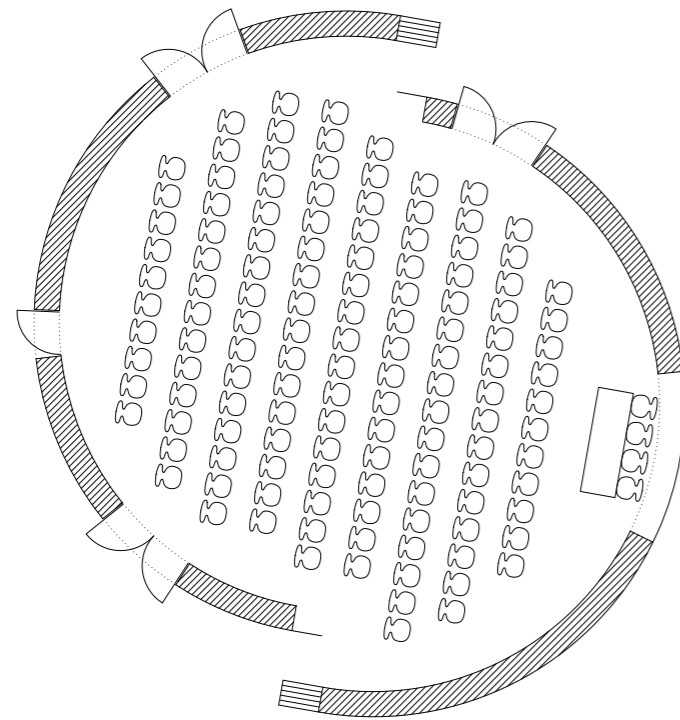
A areal: 110m²
 b areal: 53m²
 c areal: 53m²



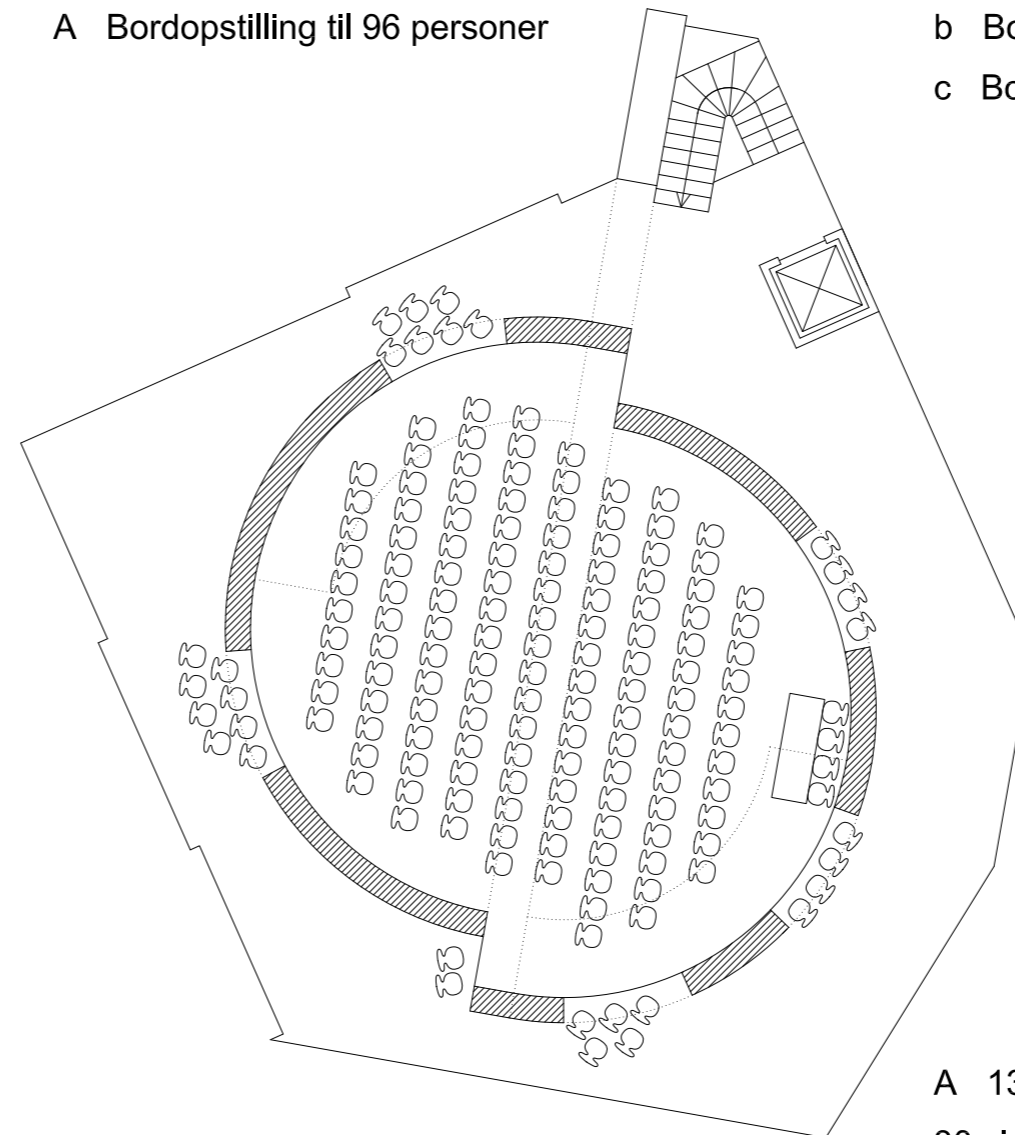
A Bordopstilling til 96 personer



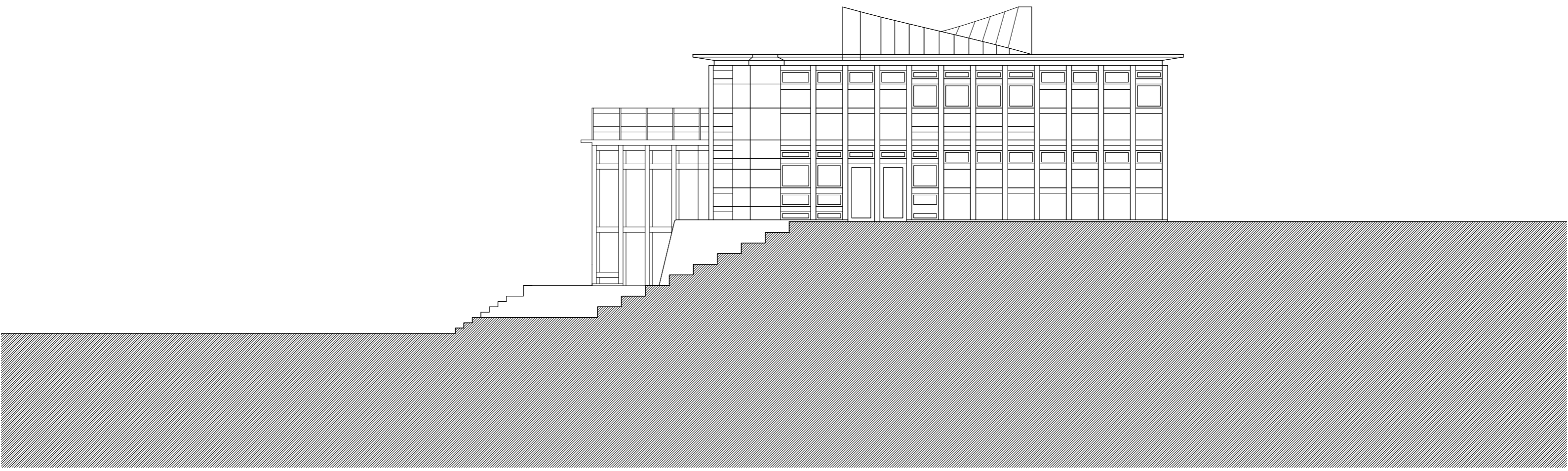
b Bordopstilling til 42 personer
 c Bordopstilling til 42 personer



A 130 siddepladser + 4 ved panelbord



A 130 siddepladser
 30 siddepladser på 1.sal
 Ialt 160 siddepladser



1m 5m 10m 20m 30m 40m 50m

Nordfacade



1m 5m 10m 20m 30m 40m 50m

Vestfacade



Perspektiv fra syd



Interior, sal / aktivitetsrum



Interior, aktivitetsrum



Eksempel stampet jord



Perspektiv fra øst / Søndergård Torv